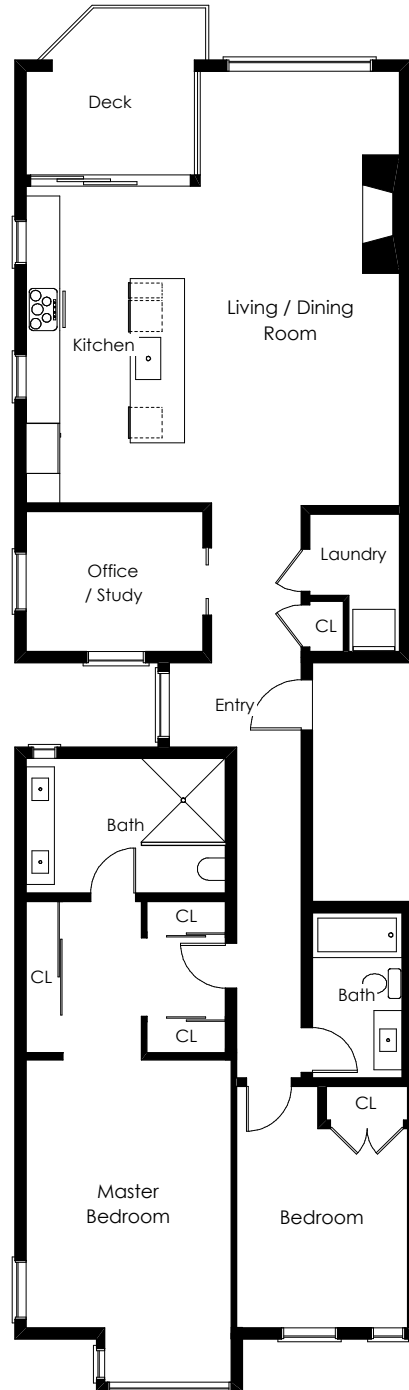




ONE THREE ONE
MISSOURI STREET

RESIDENCE 302
1,462 SQ. FT.
2+ BED | 2 BATH



* Square foot measurements have been obtained from the condominium plan and have not been verified by listing agents. Buyer advised to investigate square footage to their satisfaction.

** Prices are subject to change without notice.

*** All units are assigned one parking space and one storage space.

Missouri-Modern.com

Frank Nolan | 415.377.3726 frank@vanguardsf.com DRE #01300017

Massimo LoPorto | 415.572.6508 massimo@vanguardsf.com DRE #01898225

Vanguard Properties believes this information to be correct but has not verified this information and assumes no legal responsibility for its accuracy. Buyers should investigate these issues to their own satisfaction.



2501 Mission Street
San Francisco, CA 94110
p 415.321.7000 f 415.321.7200
www.vanguardproperties.com